

IAPL GROUP



MITSUBISHI
HEAVY INDUSTRIES
AIR CONDITIONERS

HEAVY DUTY



日本品質



HYBRID+
AIRCONDITIONER

HYPER
INVERTER



Country of Origin : Thailand

Next
Generation
High
Performance
Airconditioning

MOVE THE WORLD FORWARD



Established Since - 1884

MOVE THE WORLD FORWARD

At Mitsubishi Heavy Industries Group, we bring people, businesses and ideas as one, to pave the way to a future of shared success. Utilizing our proven, forward-thinking approach and deep industry knowledge, we offer world-class innovative and integrated solutions across a wide range of industries and technologies, from planning to execution. Passionately seeking new, simpler and sustainable ways, we work with our clients and partners around the globe to create a better future for everyone who shares our planet.



Harmonizing People and technology on a global scale

As a global manufacturer, the fields in which Mitsubishi Heavy Industries work, knows no limits, offering more than 700 products that fall in all sectors and meet different needs and lifestyles, with the aim of reconciling public needs and technological innovation. With its eyes on the future, MHI will continue to traverse uncharted lands.



Our Vision > Your Future

Vision for a Global Perspective

"Our determination to conduct business on a global scale is supported by, and reflected in, a fundamental philosophy: utilization of inherent business acumen & technological expertise accumulated over more than 40 years to assess changes that occur with the passage of time while continuously developing previously unexplored areas.

Company Philosophy

We firmly believe that simple & direct method of operation brings about confidence in doing business more cohesively which strengthens our relation with our Dealers, our Channel partners in growth. Our increased involvement & deep collaboration with our Channel Partners makes the business simpler."

IAPL Group with its nationwide network has supported a wide array of projects including residential & large commercial establishment, Offices, Business establishments, Hotels, Hospitals, Schools, Commercial Complexes, Industries, etc. We have participated in projects for large Air Conditioning Systems requiring SYSTEM INTEGRATION of imported air conditioning equipment as per the international standards lay down by our principal- M/s. Mitsubishi Heavy Industries Ltd. We ensure much superior quality of workmanship with advanced engineering skills. We have full-fledged team of qualified engineers and technical staff in the air-conditioning divisions to meet all kind of requirements. IAPL has consistently provided Channel Partners with timely and high value service, competitively priced products without sacrificing quality.

HYBRID AC gives 1.5 times bigger area coverage compared to Conventional AC & still gives electricity saving upto 47%*



AREA COVERAGE TABLE

MODEL NO.	CAPACITY	AREA COVERAGE
SRK 13 CRS-S6	1.1 Ton	Upto* 15.97 sq.mtr.**
SRK 15 CXS-W6	1.3 Ton	Upto* 17.18 sq.mtr.**
SRK 20CXS-W6	1.6 Ton	Upto* 23.23 sq.mtr.**
SRK 20 CSS-S6/A	1.6* Ton # As per BEE its 1.69 ton	Upto* 26.01 sq.mtr.**
SRK 24 CW-S6	1.95 Ton	Upto* 32.5 sq.mtr.**
SRK 25 CWX-S6	1.95 Ton	Upto* 37.17 sq.mtr.**
SRK 25 CSS-S6/A	2.2 Ton	Upto* 41.80 sq.mtr.**

* Under Standard Installation & Lab Test Condition
As per BEE its 1.69 ton



HIGH CAPACITY MACHINES

We have designed the machines using higher capacity compressor + Bigger condenser Unit for maximum heat rejection for better cooling & higher energy efficiency, there by we claim for Maximum Cooling Capacities.

Outdoor Temperature

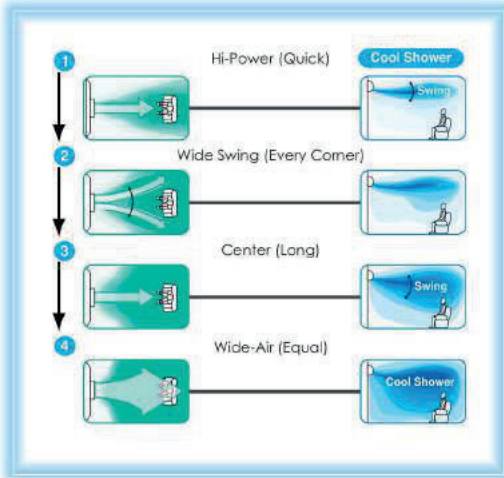


CAPACITY	MAXIMUM COOLING CAPACITY
1.1 Ton	13500 BTU/hr.
1.6 Ton	21000 BTU/hr.
2.2 Ton	26272 BTU/hr.



3D Air Flow

3D AIR VERTICAL + HORIZONTAL AIR SCROLL
3 MOTORS MAKE 3 INDEPENDENT CONTROLS



AUTO SETTING (3D AUTO)



Thanks to automatic control of air flow volume and air flow direction, comfortable air conditioning of the entire room can be done effectively.

In cooling operation cooled air flows directly to the ceiling. The cooled air does not flow directly to the occupants of the room and the comfort cooled air flow comes from the ceiling like a soft shower.

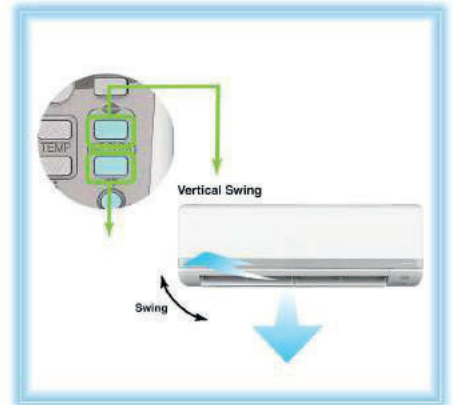
In heating operation warm air flows to the floor directly and spreads along the floor. Due to concentration of the warm air on the floor level, optimum comfort can be achieved.

MANUAL SETTING

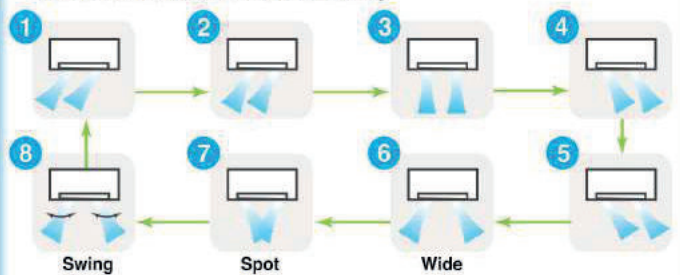
By individual control of right and left part of louver, air flow direction from the right part and the left part are controlled individually. Setting the most preferable air flow direction and determining whether direct air flow is required or not at the same time minimizing of energy loss and economical operation has realized.



SURROUND COOLING



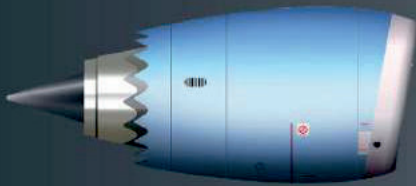
Horizontal Air Scroll 8 Direction Swing



3D AUTO is one touch programmed and three motors (one vertical working motor + two horizontal working motors) make three independent air flow controls. The air flow is uniform and quiet and reaches at long distance points from the blower.

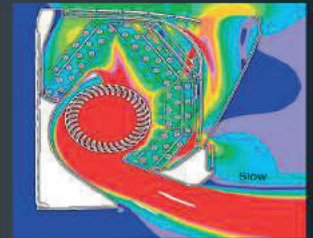
JET FLOW TECHNOLOGY

POWERFUL & SILENT AIR FLOW



JET ENGINE TECHNOLOGY

CFD (computational fluid dynamics), used in blade shape design of jet engines, has been applied to the design of air channels in air conditioners to develop the ideal air channel system (air circulation). The air flow of the jets created in this system enable a large volume of air to be blown with minimum power consumption, yet the air flow is uniform, quiet and reaches points a long distance from the blower.



Fast ← → Slow
Colors in the figure show the air speed.



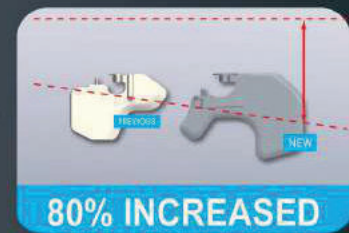
POSITIONING OF INSTALLATION

You can set the left-right air flow directions when you install the air conditioner near the side wall by remote controller operation.



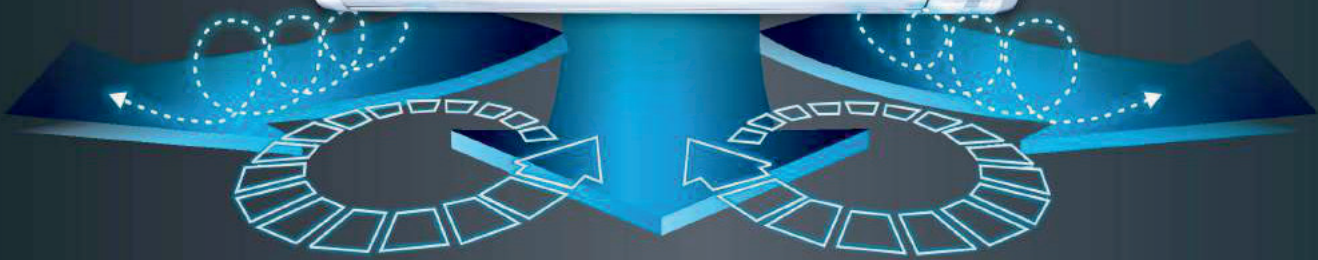
NEW LOUVER

Due to redesigned size and shape, the new louver has been increased in surface area by 80%. In addition to increase of air flow volume, it has improved controllability of swinging to right and left.



LONG REACH AIR FLOW

Powerful air flow is realized by Jet technology. Good for large living rooms and shops. Increase your comfort.

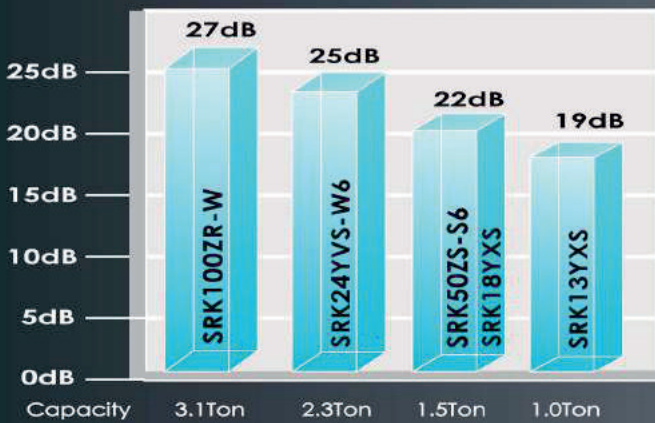


SURROUND COOLING

Silent Operation
Indoor Unit
(Hyper Inverter Series)



19dB



High Power Operation

In a cooling operation

This operation mode delivers powerful cool air to cool the room quickly. It blows powerful cool air when you want to be cooled down after bathing or returning home on a hot summer day so that you can enjoy a cool sensation immediately. The air conditioner automatically returns to the previous operation mode in 15 minutes to prevent the room from being cooled excessively.

19.81 METERS**

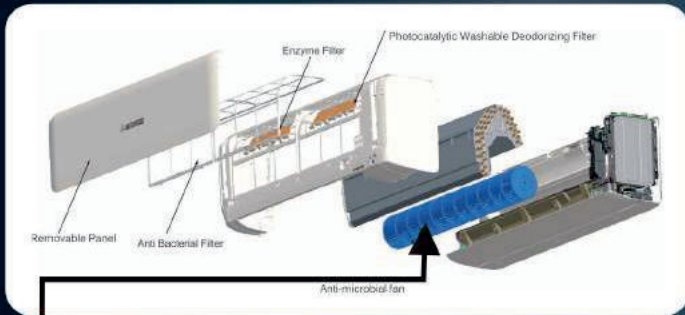
SRK100ZR (3.1 Ton)

SRK100ZR (3.1 Ton) -> 19.81 Meter**

SRK24YVS-W6 (2.2 Ton) -> 18.28 Meter**

SRK25CSS-S6/A -> 18.2 mtr** / SRK20CSS-S6/A -> 17 mtr**
(2.2 Ton) (1.6 Ton)

CLEAN AIR



ANTI-MICROBIAL FAN



FOR GERM FREE AIR
ANTI - MOULD
ANTI - BACTERIAL

ALLERGEN CLEAR OPERATION

(Available only in : SRK13YXS-W6, SRK18YXS-W6, SRK18YXS2-W6, SRK50ZS-S6, SRK100ZR-W)

This can be activated by pressing the "allergen" button on the remote control and lasts 90 minutes before stopping automatically. It neutralizes all the bacteria collected on the surface of the anti-allergenic filter thanks to its sophisticated interaction between temperature and humidity controls.



Catching Allergen on the Filter



Cooling Operation
To make condensing water.



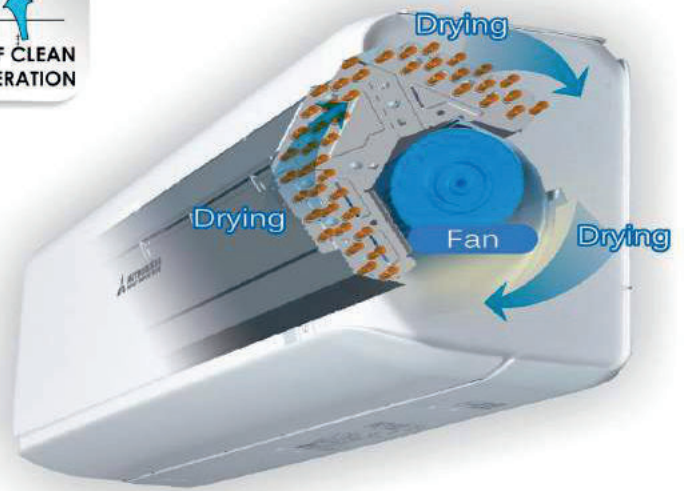
Heating Operation
To give moisture to the Filter to inactivate allergen



AIR Purify Self-Clean Operation
To dry up the indoor unit

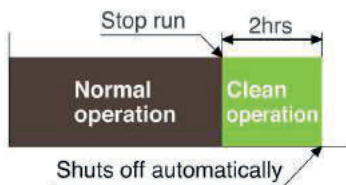


SELF CLEAN OPERATION



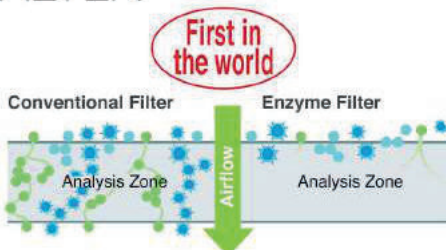
Self Clean Operation™ is operated for 2 hours after the unit has stopped its normal operation. The indoor unit is dried up and the growth of mold is restrained. Users can select whether this mode is utilized or not.

Always Keeping Indoor Unit Clean



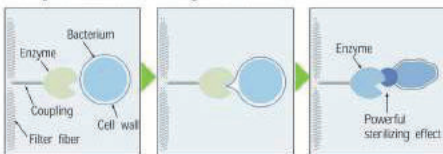
ENZYME FILTER

SURE TO DESTROY FUNGI AND BACTERIA, ALSO EFFECTIVE ON VIRUSES AND ALLERGENIC COMPOUNDS [CAT HAIR, DUST MITE, POLLEN ETC.]



Enzymes used in these filters are naturally occurring lytic enzymes. The lytic enzymes attack cell walls of microorganisms trapped on a filter and destroy them and doing so, have a powerful sterilizing which will effectively decrease the number of molds and bacteria. Natural Enzyme Filter will clean and sanitize air passing through it to keep air in the room clean and safe.

Enzyme's sterilizing mechanism



DEODORIZING SOLAR FILTER



The deodorizing ability of this filter can be easily restored simply by cleaning and exposing to the sunlight

Natural Solar Filter

It will keep the air fresh by deodorizing the molecules causing odor. Its deodorizing power can be restored by washing with water and drying under the sun, as such it is capable of repeat use.



Feature Guide

FAN SPEED button
Each time the button is pushed, the indicator is switched over in turn.

HI POWER/ECONO button
This button changes the HIGH POWER/ECONOMY mode.

TEMPERATURE button
This button sets the room temperature. (This button changes the present time and TIMER time.)

ON TIMER button
This button selects ON TIMER operation.

SLEEP button
This button changes to SLEEP operation.

CLEAN switch
This switch changes the CLEAN mode.

OPERATION MODE select button
Each time the button pushed, the indicator is switched over in turn.

ON/OFF (luminous) button
Press for starting operation, press again for stopping.

AIR FLOW (UP/DOWN) button
This button changes the air flow (up/down) mode.

AIR FLOW (LEFT/RIGHT) button
This button changes the air flow (left/right) mode.

3D AUTO button
This button sets 3D AUTO operation.

OFF TIMER button
This button selects OFF TIMER operation.

ACL switch
Switch for resetting microcomputer and setting time.

CANCEL button
This button cancels the ON timer, OFF timer, and SLEEP operation.

• The above illustration shows all controls, but in practice only the relevant parts are shown.



Electricity Saving
Hybrid AC For Electricity Saving Upto 47%*



High Capacity Machines
We have designed the machines using higher capacity compressor + Bigger Condenser Unit for maximum heat rejection for better cooling & higher energy efficiency, thereby we claim for Maximum Cooling Capacities.

INTELLIGENT AIRFLOW CONTROLS



Jet Air Flow
Aircraft technology was used in the design of the air conditioner's airflow system. We used the same aerodynamic analysis technology as used in developing jet engines.



3D Air
3D Auto For Air Distribution in 108 Direction.



Long Reach Air Flow
Jet air flow technology gives long reach airflow upto 15 mtr. for 1.5 times bigger coverage compared to conventional AC.



3D Auto



Up/ Down Swing
The UP/DOWN flap can be adjusted to the preferred operations angle, ranging from horizontal to perpendicular.



Position Of Installation
You can set the vertical louver movement at the time of installation to avoid the short cycling of cool air when AC indoor unit is installed in extreme right or left of the area to be air conditioned.



Lateral Swing
It sends a pleasant breeze to a wide range in the room by swinging the louver to right and left automatically. Louver angle can be fixed at any desired position.



New Louver
Due to redesigned size and shape, the new louver has been increased in surface area by 80%. In addition to increase of air flow volume, it has improved controllability of swinging to right and left.

CLEAN AIR



Self Clean Operation
"Self Clean Operation" is initiated after 2 hours of the unit stopping operation. Users can select whether this mode is utilized or not.



Anti Micro Bial Fan
The blower fan has undergone anti-microbial treatment of resist mold and germs, making the system clean and state. Foul odors and molds, etc. Which can occur when an air conditioning system is not in operation are prevented.



Solar Filter
Recyclable filter because of its repeatedly restorable deodorizing power. It can keep air fresh by deodorizing at molecules causing odors plentiful in the room. As its deodorizing power can be restored only by washing with water and dry under the sun, it is an Recyclable deodorizing filter usable repeatedly.



Natural Enzyme Filter
Highest disease disinfection efficiency Natural Enzyme Filter with a working mechanism of MHI Air Conditioner to suck up the disease contained air to pass into the Natural Enzyme Filter. The function of the Natural Enzyme filter will then do its duty to destroy the Cell Walls, and when the Cell Walls have been destroyed, all diseases will then die from the natural mechanism, resulting in sending out the safe and pure air from the MHI Air Conditioner.



24- Hours Ion
The air conditioner main body employs a tourmaline- coated sheet. The sheet generates negative ions around the clock. Even when the air conditioner is not running, it generates as many negative ions (2,500- 3,000/cc) as a forest stream or fall does, allowing you to experience them without incurring any electricity charges.



Anti Bacterial Filter
Anti Bacterial Filter is a washable nylon wire mesh filter used for filtering the room air, having dust & common bacteria of 40-50 microns. There by making room air clean & free of bacteria.

CONVENIENT & ECONOMY FUNCTION



Auto Restart

Power blackout auto restart function is a function that records the operational status of the air-conditioner immediately prior to it being switched off by a power cut and then automatically resumes operations at that point after the power has been restored.



Economy

The unit realized effective energy saving operation, while still keeping a comfortable cooling and heating.



Dry Operation

The unit dehumidifies the room by intermittent cooling operation.



MC (Microcomputer- Operated Defrosting)

This mode automatically eliminates frost, and helps minimize excessive operation in other modes.



Backup Switch

On the main unit, there is a backup on/off switch, which is useful when you can't use remote control or batteries are.



Longer Refrigerant Pipe Length

Long Distance piping flexibility allows the outdoor unit to be placed far from the indoor unit. This adds to convenience and facilitates easy installation of the ACs.



Luminous Button

"Luminous button" in remote controls even "glows in the dark". It is possible to operate all desired functions of the unit with the click of a button.



Sleep Mode

The room temperature is automatically controlled during the set sleep mode period, ensuring that room temperature will not get too cold or too hot.

COMFORTABLE FUNCTION:



Automatic

The air conditioner automatically selects from among heating, cooling and dry operations.



Hi Power Cooling

The unit can operate continuously in "HI POWER" mode for 15 minutes. This mode is convenient to reach the desired temperature quickly.



Fuzzy Auto Mode

Automatically, the unit determines its operating mode and temperature setting based on a fuzzy calculation, and adjusts the inverter frequency.



Auto Flap Mode:

Whatever the operating mode is, the unit automatically selects the optimal angle.



Memory Flap:

While the flap is swinging, it can be stopped at any angle desired. The flap returns to the position that it was in when operation last stopped.

MAINTENANCE & PREVENTION



Self Diagnostic

In the Case, when air conditioner malfunction, an internal Micro-Computer Automatically runs Self Diagnosis function displays the flashing LED on the indoor unit and the User is able to identify the problem by referring the user's manual troubleshooting table and inform the problem.



Detachable

The air inlet panel on the indoor unit opens and closes easily, making filter cleaning simple. The suction panel can also be removed.

TIMER



On Timer

This facility enables the operation to start a little earlier, so that the room approaches optimum temperature at ON time when the operation is started by ON-TIMER. Thus it will try to be of the temperature you want, When you



Off Timer

The unit stops automatically during the set sleep mode period. Ensuring that room temperature will not get too cold or too hot.



100% Copper

All the Models uses 100% copper pipe in Condenser coil and the Evaporator coil for maintenance free durable life and for better heat transfer.



On/Off Timer

By combining a start timer with a stop timer, you can register two of the day repeatedly.



Control

Cordless Remote Control



FROST PREVENTION FOR HEAT EXCHANGER

INDOOR FAN MOTOR PROTECTION

ABNORMALITY OF OUTDOOR UNIT

OVER CURRENT PROTECTION

COMPRESSOR OVERHEAT PROTECTION

SIGNAL TRANSMISSION ERROR PROTECTION



SENSOR DISCONNECTION PROTECTION

ROOM TEMPERATURE SENSOR

INDOOR HEAT EXCHANGER TEMPERATURE SENSOR

OUTDOOR HEAT EXCHANGER TEMPERATURE SENSOR

DISCHARGE PIPE TEMPERATURE SENSOR

OUTDOOR AIR TEMPERATURE SENSOR

HYBRID+ AIRCONDITIONER

TURBOJET
ターボジェット

1.19 mtr



SRK20C55-S6/A [1.6 Ton] / SRK25C55-S6/A [2.2 Ton]

R410A



SRK20CX5-W6 [1.6 Ton]

R32



SRK15CX5-W6 [1.3 Ton]

R32

Features

Comfortable Air Flow Functions



Comfortable Function



Convenient & Economy Functions



Maintenance



Clean Air



Others



Long Reach Air Flow



SURROUND COOLING

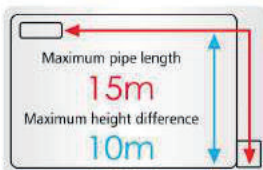


SRK25C55-S6/A [2.2Ton] →
SRK20C55-S6/A [1.6Ton] →
SRK20CX5-W6 [1.6Ton]

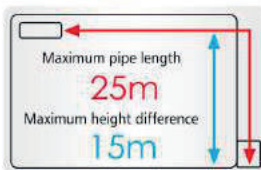
18.2 Meters**
17.0 Meters**

Specifications			HYBRID* HEAVY DUTY AC (R410A)		HYBRID* HEAVY DUTY AC (R32)	
MODEL	Unit		SRK20CSS-S6/A	SRK25CSS-S6/A	SRK15CXs-W6	SRK20CXs-W6
	Indoor Unit		SRK20CSS-S6/A	SRK25CSS-S6/A	SRK15CXs-W6	SRK20CXs-W6
	Outdoor Unit		SRC20CSS-S6/A	SRC25CSS-S6/A	SRC15CXs-W6	SRC20CXs-W6
Ton			1.6*	2.2	1.3	1.6
BEE - Star Rating - 2023			3 Star	2 Star	2 Star	3 Star
Refrigerant Control & Expansion			Dual Capillary Expansion			
Fixed Speed Compressor Type			Super Tropical - Return Cooled Rotary			
Power Source			1 Phase, 230 V, 50 Hz			
Maximum Cooling Capacity*			20997	26272	15252	20301
Rated Cooling Capacity at 100% Load	BTU/hr		20216	26017	14330	19329
Rated Cooling Capacity at 50% Load			Not Applicable for Fixed Speed AC			
Maximum Cooling Capacity*			6154	7700	4470	5950
Rated Cooling Capacity at 100% Load	Watts		5925	7625	4200	5665
Rated Cooling Capacity at 50% Load			Not Applicable for Fixed Speed AC			
Rated Power Consumption at 100% Load	watts		1485	2050	1140	1420
Rated Power Consumption at 50% Load			Not Applicable for Fixed Speed AC			
Rated EER / COP at 100% Load	W/w		3.99	3.72	3.68	3.99
Rated EER / COP at 50% Load			Not Applicable for Fixed Speed AC			
BEE Rated Indian Seasonal Energy Efficiency Ratio	ISEER		3.99	3.72	3.68	3.99
Input Power** (Minimum ~ Maximum)	Watts		1250 ~ 1485	1800 ~ 2050	900 ~ 1140	1200 ~ 1420
Current (minimum ~ maximum) **	A		5.6 ~ 6.6	8.0 ~ 9.2	4.1 ~ 5.1	5.0 ~ 6.1
Dimension (H x W x D)	Indoor Unit	mm	339 x 1197 x 262	339 x 1197 x 262	290 x 870 x 230	339 x 1197 x 262
	Outdoor Unit	mm	640 x 850 (+65) x 290	750 x 880 (+88) x 340	595 X 780 (+62) X 290	595 x 780 (+62) x 290
Net Weight	Indoor Unit	Kgs	16	16	10	16
	Outdoor Unit	Kgs	44	57	32	36
Air Flow (CMH)	Indoor Unit	m3/hr	1350	1450	850	1300
Long Reach AirFlow Upto	Indoor Unit	Meter	17.06	18.28	6.1	17
Sound Level (H/M/L)	Indoor Unit	dB	43 / 40 / 37	46 / 42 / 39	41 / 34 / 27	40 / 37 / 34
Louver Swing	Indoor Unit		3D + 3D AUTO			
Special Filter	Indoor Unit		Enzyme + Photocatalytic Deodorizing Filter + Anti Bacterial			
Blower Fan	Indoor Unit		Anti - Micro Bial			
DC Fan Motor Speed	Indoor Unit		Auto / Powerful / High / Med / Low/ Dry			
Refrigerant Injection in Coil	Indoor Unit		5 Point - Multi Port			
Refrigerant			R410A		R32	
Refrigerant Piping	Liquid Line	mm	6.35 (1/4")		6.35 (1/4")	
	Gas Line	mm	15.88 (5/8")		12.7 (1/2")	
Main Power Supply to	Outdoor Unit		2.5 mm ² x 3 cores (including earthing cable)			
Connecting wiring between	IDU & ODU		2.5 mm ² x 4 cores (including earthing cable)			
Area Coverage ***	Sq. Meter		15.97 ~ 26.01	27.87 ~ 41.80	12.54 ~ 17.18	15.97 ~ 23.23

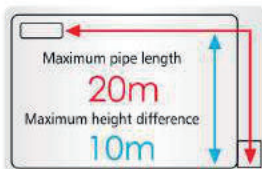
Refrigerant Pipe Length



SRK20CSS-S6/A



SRK25CSS-S6/A
SRK20CXs-W6



SRK15CXs-W6



SRC20CSS-S6/A



SRC25CSS-S6/A



SRK15CXs-W6, SRK20CXs-W6

* Cooling Capacity is derived Maximum during evening & night when the temperature is less than 31°C

** Under Standard Installation & Lab Test Condition # As per BEE its 1.69 ton

*** Check for design condition and corresponding parameters like roof / window exposed to direction sunlight, of the area to be Air-conditioned. Because of our policy of continuous improvement, we reserve the right to make changes in all specifications without any prior notice

ISEER = INDIAN SEASONAL ENERGY EFFICIENCY RATIO

HYBRID+ AIRCONDITIONER



SRK13CRS-56 (1.1 Ton)

Features

Comfortable Air Flow Functions



Clean Air

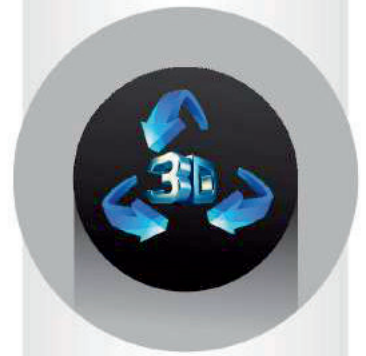


Comfortable Function



Convenient & Economy Functions

Others



SURROUND COOLING

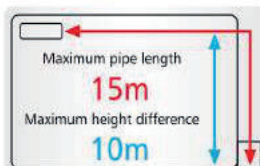


Long Reach Air Flow

SRK13CRS-56 (1.1 Ton) → 6.09 Meters**

Specifications			HYBRID HEAVY DUTY AC (R410A)
MODEL	Unit		SRK13CRS-S6
	Indoor Unit		SRK13CRS-S6
	Outdoor Unit		SRC13CRS-S6
Ton			1.1
BEE - Star Rating -2023			2 Star
Refrigerant Control & Expansion			Dual Capillary Expansion
Fixed Speed Compressor Type			Super Tropical - Return Cooled Rotary
Power Source			1 Phase, 230 V, 50 Hz
Maximum Cooling Capacity*			13501
Rated Cooling Capacity at 100% Load		BTU/hr	12283
Rated Cooling Capacity at 50% Load			Not Applicable for Fixed Speed AC
Maximum Cooling Capacity*			3957
Rated Cooling Capacity at 100% Load		Watts	3600
Rated Cooling Capacity at 50% Load			Not Applicable for Fixed Speed AC
Rated Power Consumption at 100% Load		watts	1000
Rated Power Consumption at 50% Load			Not Applicable for Fixed Speed AC
Rated EER / COP at 100% Load		W/w	3.60
Rated EER / COP at 50% Load			Not Applicable for Fixed Speed AC
BEE Rated Indian Seasonal Energy Efficiency Ratio	ISEER		3.60
Input Power ** (Minimum ~ Maximum)		Watts	700 ~ 1000
Current (minimum ~ maximum) **		A	4.0 ~ 4.7
Dimension (H x W x D)	Indoor Unit	mm	268 x 790 x 213
	Outdoor Unit	mm	595 x 780 x 290
Net Weight	Indoor Unit	Kgs	9.5
	Outdoor Unit	Kgs	35
Air Flow (CMH)	Indoor Unit	m3/hr	750
Long Reach AirFlow Upto	Indoor Unit	Meter	6.09
Sound Level (H/M/L)	Indoor Unit	dB	38 / 34 / 31
Louver Swing	Indoor Unit		3D + 3D AUTO
Special Filter	Indoor Unit		Enzyme + Solar + Anti - Bacterial Filter
Blower Fan	Indoor Unit		Anti - Micro Bial
DC Fan Motor Speed	Indoor Unit		Auto / Powerful / High / Med / Low / Dry
Refrigerant Injection in Coil	Indoor Unit		4 Point - Multi Port
Refrigerant Piping	Liquid Line	mm	6.35 (1/4")
	Gas Line	mm	12.7 (1/2")
Main Power Supply to	Indoor Unit		2.5 mm ² x 3 cores (earthing cable)
Connecting wiring between	B/w IDU &		2.5 mm ² x 4 cores (earthing cable)
Area Coverage ***	Sq. Meter		11.98 ~ 15.97

Refrigerant Pipe Length



SRK13CRS-S6



SRC13CRS-S6

* Cooling Capacity is derived Maximum during evening & night when the temperature is less than 31°C

** Under Standard Installation & Lab Test Condition

*** Check for design condition and corresponding parameters like roof / window exposed to direction sunlight, of the area to be Air-conditioned. Because of our policy of continuous improvement, we reserve the right to make changes in all specifications without any prior notice.

ISEER = INDIAN SEASONAL ENERGY EFFICIENCY RATIO

HYBRID+ AIRCONDITIONER

TURBOJET
ターボジェット

← 1.19 mtr →



SRK 24CW-S6 [1.95 Ton]
SRK 25CW-X-S6 [1.95 Ton]



SURROUND COOLING



Features

Comfortable Air Flow Functions



Comfortable Function



Convenient & Economy Functions



Maintenance



Clean Air



Others



Protection



Model SRK24CW-S6 with 2D Air flow only



Long Reach Air Flow

SRK25CW-X-S6 [1.95 Ton] →

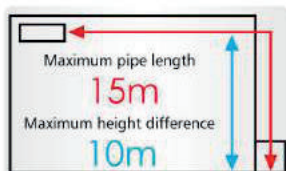
18.2 Meters**

SRK24CW-S6 [1.95 Ton] →

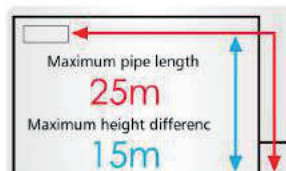
17.0 Meters**

Specifications			HYBRID+ HEAVY DUTY AC (R410A)	
MODEL	Unit		SRK24CW-S6	SRK25CWX-S6
	Indoor Unit		SRK24CW-S6	SRK25CWX-S6
	Outdoor Unit		SRC24CW-S6	SRC25CWX-S6
Ton			1.95	1.95
BEE - Star Rating - 2023			2 Star	3 Star
Refrigerant Control & Expansion			Dual Capillary Expansion	
Fixed Speed Compressor Type			Super Tropical - Return Cooled Rotary	
Power Source			1 Phase, 230 V, 50 Hz	
Rated Cooling Capacity at 100% Load	BTU/hr		23406	23458
Rated Cooling Capacity at 50% Load			Not Applicable for Fixed Speed AC	
Rated Cooling Capacity at 100% Load	Watts		6860	6875
Rated Cooling Capacity at 50% Load			Not Applicable for Fixed Speed AC	
Rated Power Consumption at 100% Load	watts		1820	1635
Rated Power Consumption at 50% Load			Not Applicable for Fixed Speed AC	
Rated EER / COP at 100% Load	W/w		3.77	4.20
Rated EER / COP at 50% Load			Not Applicable for Fixed Speed AC	
BEE Rated Indian Seasonal Energy Efficiency Ratio	ISEER		3.77	4.20
Input Power ** (Minimum ~ Maximum)	Watts		1570 ~ 1820	1385 ~ 1635
Current (minimum ~ maximum) **	A		7.0 ~ 8.1	6.2 ~ 7.3
Dimension (H x W x D)	Indoor Unit	mm	339 x 1197 x 262	339 x 1197 x 262
	Outdoor Unit	mm	640 x 800 (+71) x 290	750 x 880 (+88) x 340
Net Weight	Indoor Unit	Kgs	16	16
	Outdoor Unit	Kgs	44	52.5
Air Flow (CMH)	Indoor Unit	m3/hr	1300	1400
Long Reach AirFlow Upto	Indoor Unit	Meter	17.06	18.29
Sound Level (H/M/L)	Indoor Unit	dB	46 / 42 / 39	47 / 43 / 40
Louver Swing	Indoor Unit		2D	3D + 3D AUTO
Special Filter	Indoor Unit		Natural Enzyme + Photocatalytic Deodorizing Filter + Anti Bacterial	
Blower Fan	Indoor Unit		Anti - Micro Bial	
DC Fan Motor Speed	Indoor Unit		Auto / Powerful / High / Med / Low / Dry	
Refrigerant			R410A	
Refrigerant Piping	Liquid Line	mm	6.35 (1/4")	6.35 (1/4")
	Gas Line	mm	15.88 (5/8")	15.88 (5/8")
Main Power Supply to	Outdoor Unit		2.5 mm ² x 3 cores (earthing cable)	
Connecting wiring between	IDU & ODU		2.5 mm ² x 4 cores (earthing cable)	
Area Coverage ***	Sq. Meter		23.22 ~ 32.5	27.88 ~ 37.17

Refrigerant Pipe Length



SRK24CW-S6



SRK25CWX-S6



SRC24CW-S6



SRC25CWX-S6

* Cooling Capacity is derived Maximum during evening & night when the temperature is less than 31°C

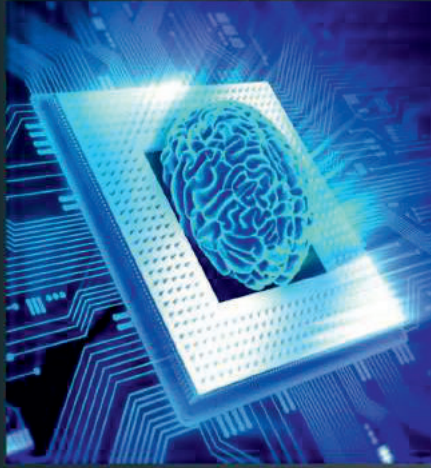
** Under Standard Installation & Lab Test Condition # Model SRK24CW-S6 with 2D Air flow only

Because of our policy of continuous improvement, we reserve the right to make changes in all specifications without any prior notice

*** Check for design condition and corresponding parameters like roof / window exposed to direction sunlight, of the area to be Air- conditioned.

HYPER INVERTER

ARTIFICIAL INTELLIGENCE



AREA COVERAGE TABLE - HYPER INVERTER

MODEL	CAPACITY (Ton)	AREA COVERAGE Upto*
SRK13YXP	1.0 (0.23 Ton ~ 1.05 Ton)	13.0 sq.mtr.**
SRK18YXP	1.5 (0.37 Ton ~ 1.5 Ton)	17.2 sq.mtr.**
SRK24YVS	2.2 (0.65 Ton ~ 2.36 Ton)	41.8 sq.mtr.**
SRK13YXS	1.1 (0.25 Ton ~ 1.25 Ton)	15.79 sq.mtr.**
SRK18YXS	1.5 (0.34 Ton ~ 1.6 Ton)	18.58 sq.mtr.**
SRK18YXS2	1.65 (0.48 Ton ~ 1.96 Ton)	26.0 sq.mtr.**
SRK50ZS-S6	1.50 (0.48 Ton ~ 1.60 Ton)	18.58 sq.mtr.**
SRK100ZR-W	3.10 (0.68 Ton ~ 3.3 Ton)	55.74 sq.mtr.**

* Check for design condition and corresponding parameters like roof / window exposed to direction sunlight, of the area to be Air- conditioned.

DC PAM Inverter Twin Rotary Compressor

Mitsubishi Heavy Duty AC of 2.0 ton & above capacity units uses DC PAM Inverter Twin Rotary Compressor which performs high efficiency operation under the wide range capacity variance from low 10% to high 120% of its nominal capacities using DC PAM Technology . Besides low vibration & low sound level, high efficiency is achieved by the optimization of mechanical parts dimension and by the application of high power Neodymium motor.



Advantages :

- Neodymium motor
- 1.5 times Higher compression ratio
- Wider range of operation
- Lower vibration & noise
- Zero Starting currents
- Improved efficiency with 0.1Hz step up
- Higher efficiency

Fuzzy Auto Mode

The temperature and humidity sensors check room conditions. The unit automatically controls the operation mode and the setting temperature to operate efficiently. Operation mode and cooling/heating capacity is controlled automatically according to one setting temperature. Fuzzy auto mode offers automatic comfort temperature control even if weather condition changes quickly.

New Inverter Vector Control

New Inverter Control has applied new advanced technology of Vector control and has realized high efficiency.

- Smooth operation from low speed to high speed
- Energy efficiency is further improved in low speed range.
- Smooth Sine Voltage Wave form are attained



EEV = Electronic Expansion Valve

Compressor Protection With AI

Feature Guide

Comfortable Air Flow Functions



Clean Air



Maintenance



Comfortable Functions



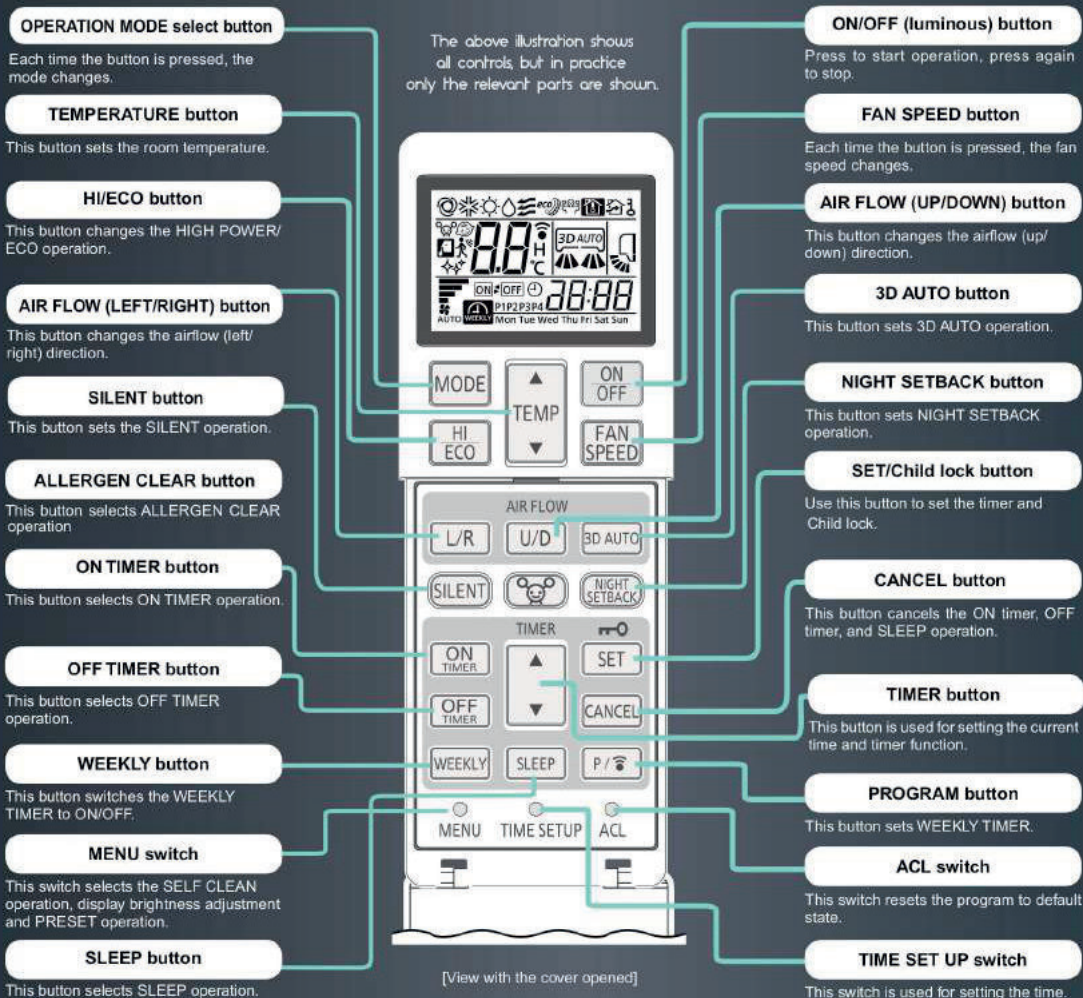
Convenient & Economy Functions



Others



Easy Control



Features Comparison

SL NO.	Features	SRK24YVS-W6	SRK13YXS-W6/ SRK18YXS-W6 SRK18YXS2-W6	SRK50ZS-S6 SRK100ZR-W	SRK13YXP-W6 SRK18YXP-W6
1	DC PAM Inverter	✓	✓	✓	✓
2	High Power Cooling	✓	✓	✓	✓
3	Jet Air Flow	✓	✓	✓	✓
4	3D Air	✓	✓	✓	
5	3D Auto	✓	✓	✓	
6	Auto Flap	✓	✓	✓	✓
7	Memory	✓	✓	✓	✓
8	Up/Down (Horizontal Louver)	✓	✓	✓	✓
9	Lateral Swing (Vertical Louver)	✓	✓	✓	
10	Position of Installation	✓	✓	✓	
11	Economy Cooling	✓	✓	✓	✓
12	Front Panel Detachable	✓	✓	✓	✓
13	Enzyme Filter	✓	✓	✓	
14	Solar Filter (Deodorizing)	✓	✓	✓	
15	Anti Micro Bial Fan	✓	✓	✓	✓
16	Self Clean Operation		✓	✓	✓
17	Allergen Filter + Activated Carbon	✓	✓	✓	
18	Auto Mode	✓	✓	✓	✓
19	Fuzzy Logic	✓	✓	✓	✓
20	Night Setback			✓	
21	Child lock		✓	✓	
22	Back-Up Switch	✓	✓	✓	✓
23	Auto Restart	✓	✓	✓	✓
24	Luminous Button	✓	✓	✓	✓
25	100% Copper	✓	✓	✓	✓
26	EEV	✓	✓	✓	✓
27	Self Diagnostic	✓	✓	✓	✓
28	Dry Mode	✓	✓	✓	✓
29	Off timer	✓	✓	✓	✓
30	Sleep Mode	✓	✓	✓	✓
31	MC (Micro Computer)	✓	✓	✓	✓
32	Silent Mode (Ulo Fan Speed)	✓	✓	✓	
33	Super Silent in Low Fan	✓	✓	✓	✓
34	R410A	✓		✓	
35	R32		✓		✓
36	Weekly Timer		✓	✓	

FROST PREVENTION FOR HEAT EXCHANGER

INDOOR FAN MOTOR PROTECTION

ABNORMALITY OF OUTDOOR UNIT

OVER CURRENT PROTECTION

COMPRESSOR OVERHEAT PROTECTION

SIGNAL TRANSMISSION ERROR PROTECTION



SENSOR DISCONNECTION PROTECTION

ROOM TEMPERATURE SENSOR

INDOOR HEAT EXCHANGER TEMPERATURE SENSOR

OUTDOOR HEAT EXCHANGER TEMPERATURE SENSOR

DISCHARGE PIPE TEMPERATURE SENSOR

OUTDOOR AIR TEMPERATURE SENSOR

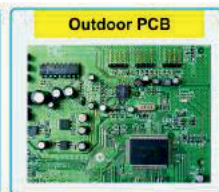
EXTENDED WARRANTY

ON HYPER INVERTER HI-WALL AC^S UPTO 2.2 TON

[Subject to warranty termes mentioned in our website]



Genuine Spares & Service Center



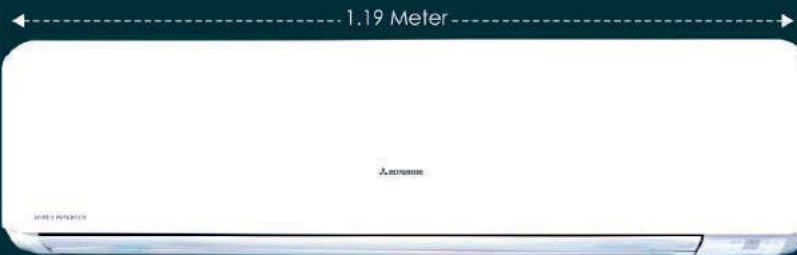
Cooling Only

Hyper Inverter ECO SMART

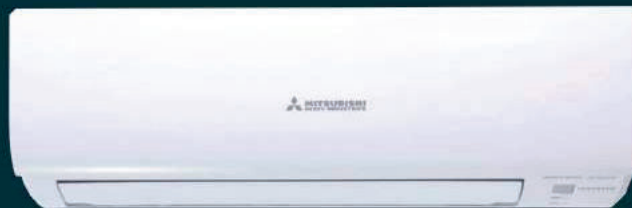
TURBOJET
ターボジェット

Series
2.2 Ton

Super High Efficiency
Excellent Energy Saving



SRK24YVS-W6 2.2 Ton (0.65 Ton ~ 2.36 Ton)



SRK13YXP-W6 1.0 Ton (0.23 Ton ~ 1.05 Ton)



SRK18YXP-W6 1.5 Ton (0.37 Ton ~ 1.51 Ton)



LONG REACH AIR FLOW

Powerful air flow is realized by Jet technology. Good for large living rooms and shops. Increase your comfort.

SRK24YVS-W6 (2.2 Ton)

18.28 METERS**

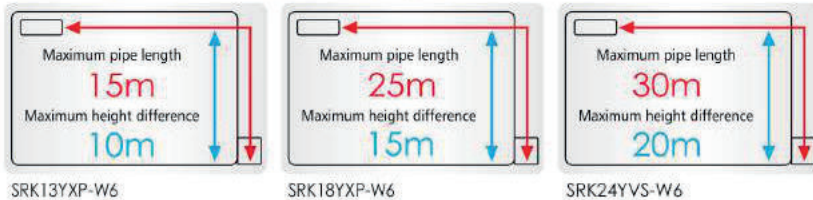


Specifications



		ECO SMART - HYPER INVERTER (R32)- COOLING ONLY		
MODEL	Unit	SRK13YXP-W6	SRK18YXP-W6	SRK24YVS-W6
	Indoor Unit	SRK13YXP-W6	SRK18YXP-W6	SRK24YVS-W6
	Outdoor Unit	SRC13YXP-W6	SRC18YXP-W6	SRC24YVS-W6
Ton - Cooling Only	(minimum -maximum)	1.0 (0.23 Ton ~ 1.05 Ton)	1.5 (0.37 Ton ~ 1.51 Ton)	2.2 (0.65 Ton ~ 2.36 Ton)
BEE Star Rating - 2023		3 Star	3 Star	5 Star
Compressor Type		Rotary	Rotary	Twin Rotary
VFD - Variable Frequency Drive		Inverter Vector Control Technology for Higher Efficiency		
Minimum Compressor RPM		7 ~ 15 RPM - Using Vector Control Technology		
Refrigerant Volume Control Using		Motorized Electronic Expansion Valve for Variable Refrigerant Flow		
LCD Remote Control (iPM Controller)		iPM (Intelligent Power Module)		
Power Source		1 Phase, 220 / 230 V, 50 Hz		
Maximum Cooling Capacity at**		15013	19107	28320
Rated Cooling Capacity at	100% Load	12420	17401	26272
Rated Cooling Capacity at	50% Load	5971	8755	13477
Maximum Cooling Capacity at**	120% Load	4400	5600	8300
Rated Cooling Capacity at	100% Load	3640	5100	7700
Rated Cooling Capacity at	50% Load	1750	2566	3950
Rated Power Consumption at	100% Load	1070	1730	1800
Rated Power Consumption at	50% Load	397	565	690
Rated EER / COP at	100% Load	3.4	2.9	4.3
Rated EER / COP at	50% Load	4.4	4.5	5.7
Rated Indian Seasonal Energy Efficiency		ISEER	3.99	5.41
Current (Minimum ~ Maximum)**		A	1.1 ~ 7.6	1.5 ~ 8.5
Dimension (H x W x D)	Indoor Unit	mm	262 x 769 x 230	262 x 769 x 230
	Outdoor Unit	mm	540 x 645(+57) x 275	540 x 780(+62) x 290
Net Weight	Indoor Unit	Kgs	7.5	7.5
	Outdoor Unit	Kgs	26.5	30.5
Cooling Coil Row	Indoor Unit	No.s	2	2
Air Flow (CMH)	Indoor Unit	m3/hr	700	850
Long Reach Air Flow Upto	Indoor Unit	Meters	5	5
Self Diagnosis Function	Indoor Unit		Yes	Yes
Sound Level (H/M/L)	Indoor Unit	dB	42 / 32 / 22	43 / 34 / 24
Louver Swing	Indoor Unit		2D (UP & DOWN)	2D (UP & DOWN)
Special Filter	Indoor Unit		Anti Bacterial - Filter	Anti Bacterial - Filter
Fan	Indoor Unit		Anti - Micro Bial Fan	
DC Fan Motor Speed	Indoor Unit		Auto / Powerful / High / Medium / Low (Ultra Low-in-silent mode in SRK24YVS)	
Refrigerant			R32	
Refrigerant Injection in Coil			3 Point - Multi Port	4 Point - Multi Port
Refrigerant Piping Thickness:18Gauge(1mm)	Liquid Line	mm	6.35 (1/4")	6.35 (1/4")
	Gas Line	mm	9.52 (3/8")	12.7 (1/2")
Main Power Supply to	Outdoor Unit		2.5 mm ² x 3 cores (including Earthing)	
Connecting wiring	B/w IDU & ODU		2.5 mm ² x 4 cores (including Earthing)	
Area Coverage ***		Sq.Meters	10 ~ 13	13 ~ 17.2
				27.8 ~ 41.8

Refrigerant Pipe Length



Remote Control



** Under Standard Installation & Lab Test Condition

*** Check for design condition and corresponding parameters like roof / window exposed to direction sunlight, of the area to be Air- conditioned. Because of our policy of continuous improvement, we reserve the right to make changes in all specifications without any prior notice

ISEER = INDIAN SEASONAL ENERGY EFFICIENCY RATIO

Cooling Only

Hyper Inverter ECO SMART



Series
1.65 Ton

INDIA'S HIGHEST ISEER HYPER INVERTER

SRK18YXS2-W6 1.65 Ton (0.48 Ton ~ 1.96 Ton)

WITH HIGHEST AIR FLOW 1434 CMH

←----- 1.19 Meter -----→



SRK18YXS2-W6 1.65 Ton (0.48 Ton ~ 1.96 Ton)



SRK13YXS-W6 1.1 Ton (0.25 Ton ~ 1.25 Ton)

SRK18YXS-W6 1.5 Ton (0.34 Ton ~ 1.6 Ton)



SURROUND COOLING



LONG REACH AIR FLOW

Powerful air flow is realized by Jet technology. Good for large living rooms and shops. Increase your comfort.

SRK18YXS2-W6 (1.65 Ton) 17.0 METERS**



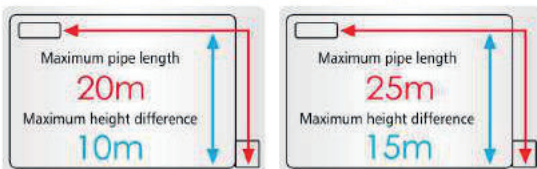
Specifications



ECO SMART - HYPER INVERTER (R32) - COOLING ONLY

MODEL	Unit	SRK13YXS-W6	SRK18YXS-W6	SRK18YXS2-W6
	Indoor Unit	SRK13YXS-W6	SRK18YXS-W6	SRK18YXS2-W6
	Outdoor Unit	SRC13YXS-W6	SRC18YXS-W6	SRC18YXS2-W6
Ton - Cooling Only	(minimum ~maximum)	1.1 (0.25 Ton ~ 1.25 Ton)	1.5 (0.34 Ton ~ 1.6 Ton)	1.65 (0.48 Ton ~1.96 Ton)
BEE Star Rating - 2023		5 Star	4 Star	5 Star
Super Tropical Compressor Type		Rotary	Rotary	Rotary
VFD - Variable Frequency Drive		Inverter Vector Control Technology for Higher Efficiency		
Minimum Compressor RPM		7 ~ 15 RPM - Using Vector Control Technology		
Refrigerant Volume Control Using		Motorized Electronic Expansion Valve for Variable Refrigerant Flow		
LCD Remote Control (iPM Controller)		iPM (Intelligent Power Module)		
Power Source		1 Phase, 220 / 230 V, 50 Hz		
Maximum Cooling Capacity	120% Load	15013	19107	23542
Rated Cooling Capacity at	100% Load	13000	18425	19875
Rated Cooling Capacity at	50% Load	6517	8991	9997
Maximum Cooling Capacity	120% Load	4400	5600	6900
Rated Cooling Capacity at	100% Load	3810	5400	5825
Rated Cooling Capacity at	50% Load	1910	2635	2930
Rated Power Consumption at	100% Load	1000	1454	1320
Rated Power Consumption at	50% Load	332	468	470
Rated EER	100% Load	3.8	3.7	4.4
Rated EER	50% Load	5.8	5.6	6.2
Rated Indian Seasonal Energy Efficiency		ISEER	4.99	5.70
Current (minimum ~maximum)**		A	0.70 ~ 4.8	1.1 ~ 6.7
				1.1 ~ 6.5
Dimension (H x W x D)	Indoor Unit	mm	290 x 870 x 230	290 x 870 x 230
	Outdoor Unit	mm	540 x 645(+57) x 275	640 x 800(+71) x 290
Net Weight	Indoor Unit	Kgs	10.0	10.0
	Outdoor Unit	Kgs	27	37
Cooling Coil Row	Indoor Unit	No.s	2	3
Air Flow	Indoor Unit	CMH	850	1100
Long Reach Air Flow Up to	Indoor Unit	Meters	5.18	6.10
Self Diagnosis Function	Indoor Unit		Yes	Yes
Sound Level (H/M/L/Ulo)	Indoor Unit	dB	41 / 35 / 29 / 19(Ulo)	46 / 39 / 32 / 23 (Ulo)
Louver Swing	Indoor Unit		3D + 3D AUTO	
Special Filter	Indoor Unit		Enzyme + Solar (Deodorising Filter) + Anti Bacterial - Filters	
Blower Fan	Indoor Unit		Anti - Micro Bial Fan	
DC Fan Motor Speed	Indoor Unit		Auto / Powerful / High / Medium / Low / Ulo (Silent Mode) / Dry	
Refrigerant			R32	R32
Refrigerant Piping Thickness:18Gauge	Liquid Line	mm	6.35 (1/4")	6.35 (1/4")
	Gas Line	mm	9.52 (3/8")	12.7 (1/2")
Main Power Supply to	Outdoor Unit		2.5 mm ² x 3 cores (with Earthing Cable)	
Connecting wiring	B/w IDU & ODU		2.5 mm ² x 4 cores (with Earthing Cable)	
Area Coverage ***		Sq. Meters	12 ~ 15.79	15.3 ~ 18.5
				18.58 ~ 26.0

Refrigerant Pipe Length



SRK13YXS-W6

SRK18YXS-W6 / SRK18YXS2-W6

Remote Control



SRK13YXS-W6 / SRK18YXS-W6
SRK18YXS2-W6

** Under Standard Installation & Lab Test Condition

*** Check for design condition and corresponding parameters like roof / window exposed to direction sunlight, of the area to be Air-conditioned. Because of our policy of continuous improvement, we reserve the right to make changes in all specifications without any prior notice

ISEER = INDIAN SEASONAL ENERGY EFFICIENCY RATIO

Hyper Inverter ECO SMART



Series
3.1 Ton
2.1 Ton

Elegant Timeless Design



SRK100ZR-W 3.1 Ton (0.68 Ton ~ 3.3 Ton)



SRK50ZS-S6 1.5 Ton(0.48 Ton ~ 1.60 Ton)



Super High Efficiency
Excellent Energy Saving

Built in Reversible Solenoid Valve
for Heating & Cooling Mode



SURROUND COOLING



LONG REACH AIR FLOW

Powerful air flow is realized by Jet technology. Good for large living rooms and shops. Increase your comfort.

SRK100ZRS-W (3.1 Ton) **19.81 METERS****

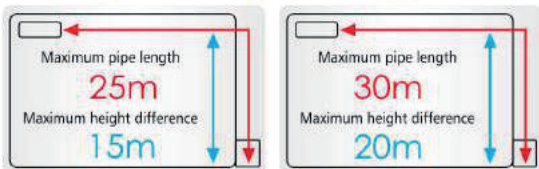


Specifications



		ECO SMART - HYPER INVERTER (R410A) - COOLING + HEATING	
MODEL	Unit	SRK50ZS-S6	SRK100ZR-W
	Indoor Unit	SRK50ZS-S6	SRK100ZR-W
	Outdoor Unit	SRC50ZS-S6	FDC100VNP/1
Ton - Cooling	(minimum - maximum)	1.50 (0.48 Ton ~ 1.60 Ton)	3.10 (0.68 Ton ~ 3.3 Ton)
Ton - Heating	(minimum - maximum)	1.65 (0.45 Ton ~ 1.90 Ton)	3.18 (0.90 Ton ~ 3.3 Ton)
Cooling & Heating Function		Built in Reversible Solenoid Valve for Cooling & Heating Mode	
BEE STAR RATING - 2023		4 Star	NOT APPLICABLE *
Compressor Type		Super Tropical - DC PAM Inverter - Return Cooled - Rotary	Super Tropical - DC PAM Inverter - Return Cooled - Twin Rotary
VFD - Variable Frequency Drive		Inverter Vector Control Technology for Higher Efficiency	
Minimum Compressor RPM		7 ~ 15 RPM - Using Vector Control Technology	
Refrigerant Volume Control Using		Motorized Electronic Expansion Valve for Variable Refrigerant Flow	
LCD Remote Control (iPM Controller)		iPM (Intelligent Power Module)	
Power Source		1 Phase, 220 / 230 V, 50 Hz	
Maximum Cooling Capacity at 120% Load	BTU/hr	18766	39579
Rated Cooling Capacity at 100% Load		17231	37208
Rated Cooling Capacity at 50% Load	Watts	8615	18664
Maximum Cooling Capacity at 120% Load		5500	11600
Rated Cooling Capacity at 100% Load	Watts	5050	10905
Rated Cooling Capacity at 50% Load		2525	5470
Rated Power Consumption at 100% Load	watts	1375	3090
Rated Power Consumption at 50% Load		485	1500
Rated EER/ COP at 100% Load	W/w	3.7	3.5
Rated EER/ COP at 50% Load		5.2	3.6
Rated Indian Seasonal Energy Efficiency	ISEER	4.75	3.83#
Current (Minimum ~ Maximum)**	A	1.30 ~ 6.5	3.0 ~ 14.0
Maximum Heating Capacity**	BTU/hr	22519	39238
Minimum Heating Capacity		5459	10918
Rated Heating Capacity	Watts	19790	38214
Maximum Heating Capacity**		6600	11500
Minimum Heating Capacity	Watts	1600	3200
Rated Heating Capacity		5800	11200
Maximum Power Consumption	watts	1550	3280
Minimum Power Consumption		250	650
Rated Power Consumption	W/w	1300	3000
EER at Maximum Heating Capacity		4.26	3.51
EER at Minimum Heating Capacity	W/w	6.40	4.92
EER at Rated Heating Capacity		4.46	3.73
Current (Heating mode)	A	1.0 ~ 6.0	2.5 ~ 13.7
Dimension (H x W x D)	Indoor Unit	mm	290 x 870 x 230
	Outdoor Unit	mm	339 x 1197 x 262
Net Weight	Indoor Unit	Kgs	10
	Outdoor Unit	Kgs	36.5
Cooling Coil Row	Indoor Unit	No.s	3
Air Flow	Indoor Unit	CMH	1000
Long Reach Airflow Up to	Indoor Unit	Meters	6.09
Self Diagnosis Function	Indoor Unit		Yes
Sound Level (H/M/L/ULO)	Indoor Unit	dB	45 / 36 / 28 / 22 (U-low)
Louver Swing	Indoor Unit		3D + 3D AUTO
Special Filter	Indoor Unit		Allergen + Solar + Anti Bacterial - Filters
Blower Fan	Indoor Unit		Anti - Micro Biol Fan
DC Fan Motor Speed	Indoor Unit		Auto / Powerful / High / Medium / Low / ULO (Silent Mode) / Dry
Refrigerant Piping Thickness: 18 Gauge (1mm)	Liquid Line	mm	6.35 (1/4")
	Gas Line	mm	12.7 (1/2")
Main Power Supply to	Outdoor Unit		2.5 mm ² x 3 cores (with Earthing Cable)
Connecting wiring	B/w IOU & ODU		2.5 mm ² x 4 cores (with Earthing Cable)
Operating Temperature Range	Heating	°C	-15°C ~ 24°C
Area Coverage***	Sq. Meters		15.32 ~ 18.58

Refrigerant Pipe Length



SRK50ZS-S6

SRK100ZR-W

Remote Control



SRK50ZS-S6
SRK100ZR-W

* = Model : SRK100ZR-W is of 3.1 ton. As per BEE notification, Star Rating is applied only for models upto 3.0 ton capacity only.

= This is an indicative ISEER for Model : SRK100ZR-W, since BEE Star Rating regulations are not applicable for this model.

** Under Standard Installation & Lab Test Condition

*** Check for design condition and corresponding parameters like roof / window exposed to direction sunlight, of the area to be Air-conditioned.

Because of our policy of continuous improvement, we reserve the right to make changes in all specifications without any prior notice

ISEER = INDIAN SEASONAL ENERGY EFFICIENCY RATIO



Our Motto
"Customer Satisfaction Index No.-1"



TOWARDS
A BETTER
FUTURE
TOGETHER

PRECAUTIONS

Always get the Mitsubishi Heavy Ind. Airconditioners installed by Authorized Mitsubishi Heavy Ind. Sales & Service Channel Partners only. Do not try to install the AC either by yourself or any unauthorized dealer. Improper installation can result into non performance, low cooling, refrigerant leakage, electrical shocks.

Warranty of the product shall be null & void, if not installed by an authorized Mitsubishi Heavy Ind. Sales & Service Channel Partner. In no case it will be company's responsibility if the AC unit is installed by an unauthorized dealer, is unable to perform.

Warranty of the AC unit component shall be null & void if non specified/non genuine spares are used or repaired by an unauthorized dealer.

Because of our policy of continuous improvement, we reserve the right to make changes in all specifications without notice. In case of any adverse area to be conditioned, if it is not verified by the company/dealer engineer and selection of the AC unit is made by the customer based on the specifications without taking any prior advice, then company will not be responsible for any variance in the performance of the AC unit installed.

Mitsubishi Heavy Industries- Mahajak Air Conditioners Co.Ltd. Lat krabang Industries Estate, Phase 3, 200 Moo 4, Chalongsong Road, Lamplafiew, Lat krabang, Bangkok Thailand 10520

Sales, Service & Marketing Headquarter (India)



IAPL House, 2/8, West Patel Nagar
Near Patel Nagar Metro Station- New Delhi- 110008 (INDIA)
Tel.: 011-47230000-99, Toll Free No.: 1800 102 0055
Email: info@iaplgroup.com, Website: www.iaplgroup.com

AGRA : 7290094935/8006003003, AHMEDABAD : 9978991675, SURAT : 9979025320, ASSAM : 8420768025, BANGALORE : 9849102323, BIHAR : 8588864471, BHOPAL : 9630098716, BHUBANESWAR : 8697706531, CHENNAI : 8939991872, COCHIN : 9946446067, COIMBATORE : 9811889006, DEHRADUN : 8826899163, DELHI & NCR : 8826392381, DELHI : 8826392374, GHAZIABAD : 8826899163, GWALIOR : 9630098716, HARYANA : 7290094933 / 8929602345, HYDRABAD : 9849102323, INDORE : 9630033341, J & K : 9915009212 / 9599656801, JABALPUR : 9630098716, JAIPUR : 8588830502, JHARKHAND : 6290824780, JODHPUR : 9636992277, KOLKATA : 8697744670, LUCKNOW : 8929602483, LUDHIANA : 8283843670 / 9599656893, MUMBAI : 8879599905, MEGHALAYA : 8420768025, NAGPUR : 9657004567, NASIK : 7291972089, NOIDA : 8826899163, PATNA : 8588864471, PUNE : 7291972089, PUNJAB : 9915009212 / 9599656801, RAIPUR : 9821197915, RAJKOT : 9727731456, SURAT : 9978996351, THRISSUR : 9946446067, TRICHY : 9811889006, TRIPURA : 8420768025, UDAIPUR : 9636992211, VADODARA : 9978991675, VIJAYAWADA : 9550488000.



(Wholly-owned subsidiary of MITSUBISHI HEAVY INDUSTRIES, LTD.)



Our factories are ISO9001 and ISO14001 certified.

Certified ISO 9001

Certified ISO 14001



MITSUBISHI HEAVY INDUSTRIES
THERMAL SYSTEMS, LTD.
Mitsubishi Heavy Industries, Ltd.
1-1-1 Higashi 2-chome, Amagasaki
City, Hyogo Prefecture, Japan
643-0292

MITSUBISHI HEAVY INDUSTRIES
THERMAL SYSTEMS, LTD.
Mitsubishi Heavy Industries, Ltd.
1-1-1 Higashi 2-chome, Amagasaki
City, Hyogo Prefecture, Japan
643-0292

MITSUBISHI HEAVY INDUSTRIES
THERMAL SYSTEMS, LTD.
Mitsubishi Heavy Industries, Ltd.
1-1-1 Higashi 2-chome, Amagasaki
City, Hyogo Prefecture, Japan
643-0292

MITSUBISHI HEAVY INDUSTRIES
THERMAL SYSTEMS, LTD.
Mitsubishi Heavy Industries, Ltd.
1-1-1 Higashi 2-chome, Amagasaki
City, Hyogo Prefecture, Japan
643-0292

MITSUBISHI HEAVY INDUSTRIES
THERMAL SYSTEMS, LTD.
Mitsubishi Heavy Industries, Ltd.
1-1-1 Higashi 2-chome, Amagasaki
City, Hyogo Prefecture, Japan
643-0292

MITSUBISHI HEAVY INDUSTRIES
THERMAL SYSTEMS, LTD.
Mitsubishi Heavy Industries, Ltd.
1-1-1 Higashi 2-chome, Amagasaki
City, Hyogo Prefecture, Japan
643-0292